



HELPING HAWAI'I TOGETHER



CREATING CHANGE TOGETHER

UNITED FOR CHANGE

I ❤️ AUV

BE THE CHANGE

CHANGE STARTS WITH YOU

UNITED FOR CHANGE

- **Year in Review**
- **A Letter from President & CEO, John Fink**
- **Mission and Identity**
- **ALICE Initiative**
- **AUW 211 Statewide Resource Helpline**
- **Safety Net**
- **Partner Agencies**
- **Financial Summary**
 - Grants, Trusts, and Foundations
 - Alexis de Tocqueville Society
 - Leadership Donors
 - In-kind Gifts
 - Ānuenuue Legacy Society



JANUARY 2022

AUW and the Hawai'i Community Foundation publicly announce three-year partnership to provide \$4.5 million for ALICE Initiative

JANUARY 2022

AUW launches the City & County's Isolation and Quarantine services program

FEBRUARY 2022

\$1,197,000 in Safety Net funds awarded to 42 partners

MARCH 2022

Isolation & Quarantine program closes

MARCH 2022

AUW helps to launch the CLIFFS Benefits Tool with the Federal Reserve

MARCH 2022

AUW administers \$1,849,104 in Emergency Food and Shelter Program (EFSP) funds to 18 Partner Agencies

APRIL 2022

ALICE Cohort 2 officially launches with \$1,500,000 awarded to 17 grantees

APRIL 2022

211 launches the Substance Use Disorder (SUD) Helpline with Department of Health and Hawai'i CARES

APRIL 2022

Women United holds annual "Chocolate, Champagne & Couture-For-A-Cause"

MAY 2022

"ALICE in Focus: Children" report is released

JUNE 2022

Society of Young leaders holds 1st annual 'Fore da Keiki' golf tournament

JUNE 2022

AUW is awarded \$5.6 million Housing & Urban Development (HUD) grant for Housing Support

JULY 2022

First ALICE cohort convening is held virtually

JULY 2022

Field work begins for the first local ALICE study, supported by Bank of Hawai'i

AUGUST 2022

First in-person ALICE cohort convening is held

AUGUST 2022

Annual Workplace Campaign kicks off with sign waving rally

OCTOBER 2022

Annual Holiday Wish lists for partner agencies are published

NOVEMBER 2022

"ALICE in Hawai'i 2022 Facts & Figures" report released by AUW

DECEMBER 2022

AUW distributes 1,900 plush toys to partners for the holidays

LETTER FROM PRESIDENT & CEO JOHN FINK

Aloha Donors & Community,

In 2022, Aloha United Way invested nearly \$13 million into the community, facilitated more than 42,000 requests to the A UW 211 resource helpline and supported nearly 320 non-profit partner agencies. We launched our new three-year strategic plan and made significant progress on our internal transformation, including revamping our IT systems, and enhancing our digital presence.

We doubled our 211 Helpline capacity by partnering with the State of Hawai'i Dept. of Health to integrate the Hawai'i CARES Substance Use Disorder (SUD) Helpline under 211.

We became more active and visible with government leaders and secured additional funding for our programs. The ALICE program is now the benchmark for discussing families in need or on the edge of financial collapse, mentioned frequently in the media and by top government officials. A new ALICE report was used to advocate for bills on issues such as Earned Income Tax credits and the food excise tax credit.

We reached new heights on both our number of Tocqueville Society members and total dollars garnered in the program, and we exceeded our revenue goals through our workplace campaigns in 2022; planned giving to A UW also increased.

All in all, 2022 was a solid year on many, many fronts for A UW, the agencies we partner with, and the hundreds of thousands of people served through everyone's tenacious work.



John Fink
President & CEO



ALOHA UNITED WAY ADVANCES THE HEALTH, EDUCATION, AND FINANCIAL STABILITY OF EVERY PERSON IN OUR COMMUNITY BY BRINGING TOGETHER RESOURCES, ORGANIZATIONS, AND PEOPLE.

OUR ROOTS

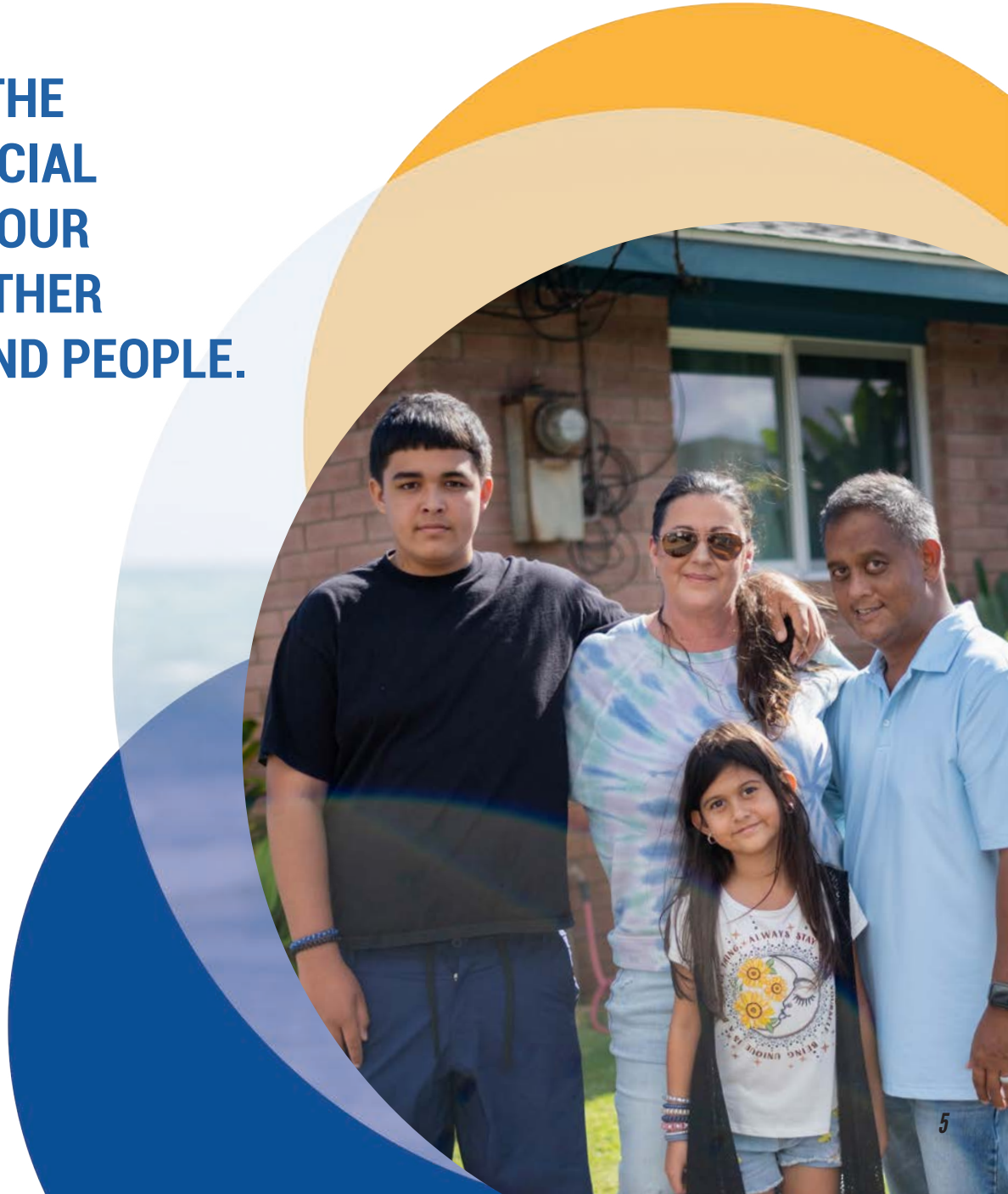
Aloha United Way was originally established by Frank C. Atherton as the United Welfare Fund, under the Chamber of Commerce, in 1919 to create a more efficient way of distributing charitable giving.

LEADING WITH EQUITY

We believe that diversity, inclusion, equity, and justice are essential for a healthy society. It is our responsibility to actively practice and promote these values and condemn all forms of discrimination in our daily work.

TODAY AND TOMORROW

Both AUW and Hawai'i have changed over the years. Today, Aloha United Way is an advocate, connector, partner, and resource. We have evolved to become one of the most impactful and innovative organizations in Hawai'i, leading the work to improve lives for generations to come.



THE AUW ALICE FUND

The ALICE Initiative fuels systemic change for working families earning income above the federal poverty line but below what can support their household's basic needs. In 2022, Aloha United Way, in partnership with The Hawai'i Community Foundation, launched its 2nd 3-year cohort, committing at least \$4.5 million over 3 years, including \$1.5 million in 2022 to support.

The cohort size increased from 10 to 17 participants with each committed to working together to Safe and Affordable Housing and Financial Stability and Savings for families in Hawai'i.

ALICE GRANTEES

- Catholic Charities Hawai'i
- Council for Native Hawaiian Advancement
- Family Promise of Hawai'i
- Feed The Hunger Fund
- Goodwill Industries of Hawai'i, Inc.
- Hawai'i Appleseed Center for Law and Economic Justice
- Hawai'i Children's Action Network
- Hawai'i HomeOwnership Center
- Hawaiian Community Assets
- IHS, The Institute for Human Services
- Institute for Native Pacific Education and Culture
- Kōkua Kalihi Valley Comprehensive Family Services
- Legal Aid Society of Hawai'i
- Parents and Children Together
- Partners in Development Foundation
- Residential Youth Services & Empowerment (RYSE)
- Waikīkī Community Center



2022 marked the beginning of a new ALICE cohort who are working to bring large-scale systems change to elevate ALICE households. In partnership with the Hawai'i Community Foundation (HCF), Aloha United Way funded 17 nonprofit agencies to increase financial stability and savings and generate access to safe and affordable housing for those below the ALICE threshold. AUW and HCF will collectively put \$1,500,000 per year to these innovative and scalable programs.

THE FOLLOWING PARTNER AGENCIES WERE AWARDED THREE-YEAR GRANTS FROM THE ALICE® FUND FOR 2022, 2023, 2024.

Catholic Charities Hawai'i

Catholic Charities Hawai'i (CCH) will provide the Akahai 'E Komo Mai' (Akahai), a financial wellness program designed to assist ALICE families to achieve household stability and develop the skills to build a pathway out of poverty.

Council for Native Hawaiian Advancement

CNHA's Hawaiian Trades Academy provides workforce development for economically and socially disadvantaged communities. The goal of the program is to raise the household income of families in Hawai'i.

Family Promise of Hawai'i

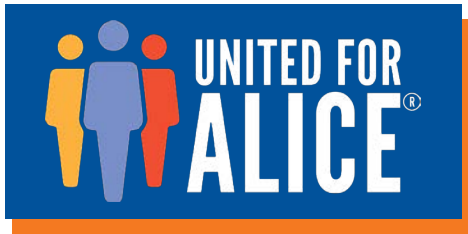
To help ALICE families stabilize, Family Promise of Hawai'i is launching a new initiative called WAA (Working, Attaining, Achieving). The program will support financial stability and an increase in savings for ALICE families.

Feed The Hunger Fund

The Investing in Economic Growth Program aims to increase earned income and savings for ALICE households by providing \$3.5 million in loan capital to low-income entrepreneurs otherwise unable to access loans.

Goodwill Industries of Hawai'i, Inc.

Goodwill's partnership with Komohale Services will offer an array of services on-site at Komohale's affordable rental housing to address residents' needs to get ahead, overcome challenges, and gain greater financial independence.



CONT'D: THE FOLLOWING PARTNER AGENCIES WERE AWARDED THREE-YEAR GRANTS FROM THE ALICE® FUND FOR 2022, 2023, 2024.

Hawai'i Appleseed Center for Law and Economic Justice

Hawai'i Appleseed will support the work of the ALICE Cohort by: (1) engaging the perspectives and voices of ALICE households to inform and pursue policy change; (2) providing policy research to identify effective means of addressing economic inequity; and (3) supporting collective action to achieve systemic change.

Hawai'i Children's Action Network

Hawai'i Children's Action Network will work to build and strengthen the voice of ALICE families to advocate for policies and systems changes that increase household income and reduce household expenses.

Hawai'i HomeOwnership Center

Hawai'i HomeOwnership Center provides classes, coaching, and post-purchase services to create sustainable homeowners. Program members are primarily low-moderate income and money management, and understanding credit is the foundation of our curriculum.

Hawaiian Community Assets Inc.

The Economic Self-Sufficiency for ALICE households and Below project will address the need for financial counseling, income supports, and career coaching to improve the financial capacity of ALICE and below households to achieve economic self-sufficiency.

IHS, The Institute for Human Services, Inc.

IHS' Kahauiki Village (KV) program will continue to provide affordable, permanent housing and supportive services for formerly homeless families with earned income. In addition to direct services provided by IHS' KV staff, partner agencies and community groups provide a variety of children's education and enrichment, family strengthening, and parent skill building activities on site.

Institute for Native Pacific Education and Culture

INPEACE helps educate ALICE households through workshops and coaching centered around personal finances. Ho'oulu Waiwai, which translates to "to build wealth," is a community-based program that works to improve financial stability through education.

Kōkua Kalihi Valley Comprehensive Family Services

The goal of this project is to increase economic sovereignty among KKV ALICE households by providing, through KKV and its partners, a broader and sustainable array of economic supports, including an expanded public benefits enrollment team and new (for KKV) financial, job and educational guidance services, as a standard component of KKV programming long term.

Legal Aid Society of Hawai'i

This program supports the levers that move ALICE households toward economic stability and mobility, by providing legal information and services that address barriers to mobility.

Parents And Children Together

PACT will provide immediate economic improvement for ALICE families and advocate for policy and systems changes that address the impossible financial burdens for individuals and families that are under resourced.

Partners in Development Foundation

PIDF's Kupa Aina (KA) natural farming project will expand its community partnerships to provide Hawai'i's most at-risk/vulnerable youth with mentorship and vocational training opportunities, financial literacy education, and supplemental services to increase their independence and financial stability.

Residential Youth Services & Empowerment dba RYSE

Residential Youth Services & Empowerment (RYSE) provides a continuum of support for Hawai'i's houseless youth aged 18-24. Its new Tiny Village in Wai'anae provides a long-term paradigm shift by providing ALICE and house-less youth with dignified spaces that are well integrated into the Hawai'i community.

Waikīkī Community Center

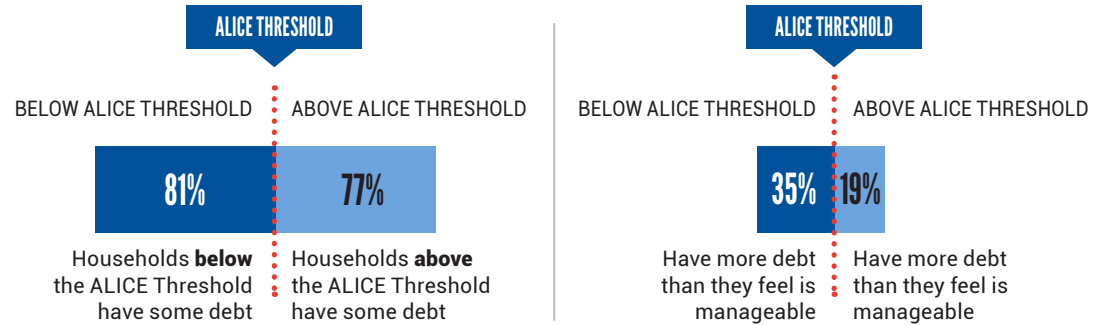
Waikīkī Community Center's ALICE Asset Building and Resource Access program increases financial stability for ALICE seniors and families by creating a seamless network of support that provides the holistic services needed to address their multiple challenges, stabilize their situations, and allow them to thrive.

ALICE IN HAWAI'I 2022 REPORT

With the generous support of the Bank of Hawai'i Foundation, Aloha United Way released a new ALICE report based on up-to-date local survey data to understand how the pandemic affected our ALICE families. Data showed that ALICE households were heavily impacted, and those impacts continued through 2022.

The report quickly informed specific policy and actions among the ALICE grantees and supporters and provided clear data on rapidly growing mental health impacts and savings depletion many ALICE households faced by the end of 2022.

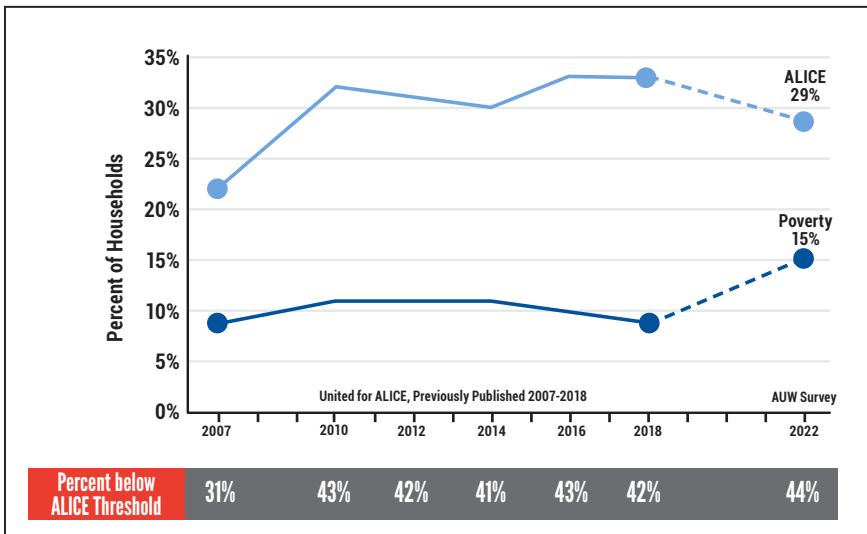
UNMANAGEABLE DEBT LOAD



BELOW ALICE THRESHOLD More than 1 in 3 households below the ALICE Threshold report they have more debt than is manageable.

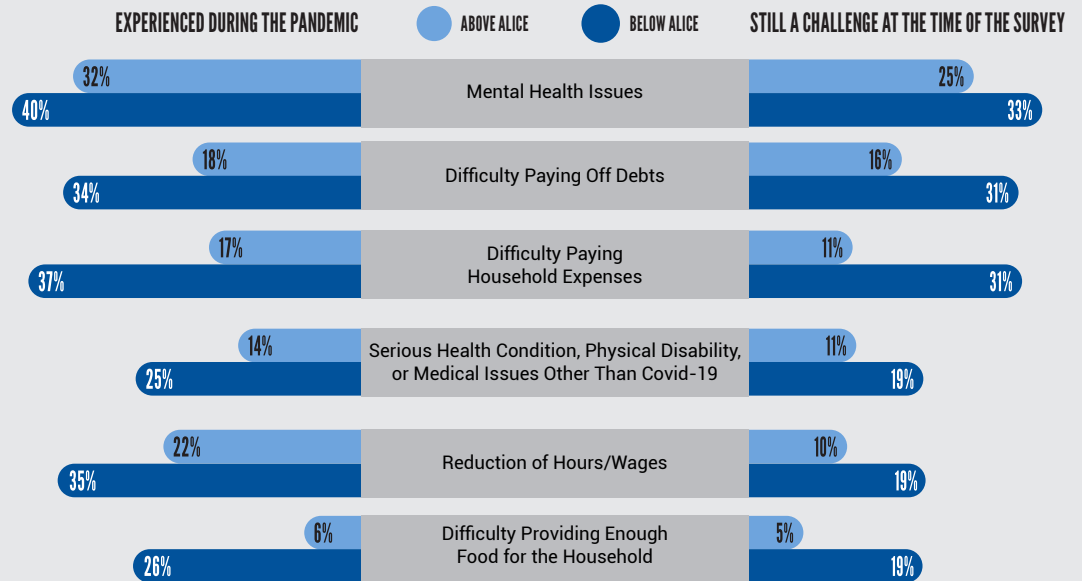
2022 ALICE REPORT SHOWS SHARP INCREASE IN POVERTY AND INEQUITABLE IMPACTS OF COVID-19 PANDEMIC

HOUSEHOLD BY INCOME
Hawai'i 2007-2022



*Note: Data for 2007-2018 is from previously published reports by United for ALICE. Data for 2022 was collected by Anthology for this Aloha United Way (AUW) Survey.

THE EFFECT OF THE COVID-19 PANDEMIC



AUW STAFF 2022

211 and SUD

Jennifer Pecher
Alexander Stroble
Amy Higa
Celena Lopez
Elliott Plourde
Garret Hashimoto
Josue Osegueda
Kelsi Tamanaha
Kingslay Zelee
Leialoha Tumbaga
Lesley Shibata
Mapo Kesi
Michele Latimer
Chenoa Soares
Naomi Koshiishi
Nathaniel Cippelle
Rayann Wilmot
Robert Cornejo
Ronald Betts
Saifagaloa Mauai
Tina Tharp
Zuri Bender

Community Impact

Kayla Keehu-Alexander
Elizabeth Maae
Genevieve Noriega Kosay
Jonah Cabiles
Kimo Carvalho
Lisa Kimura
Melanie Kaaihue-Yoshida
Sunshine Kuhia-Smith
Vianca Sorkin

Finance & Accounting

Dayle Murakami
Earl Fusato
Charisse Agraan
Fraise Moore
Jennifer Langas
Leiolynn Ladore
Phylicia Murray
Valerie Wilson
Wayne Nishikawa

Information Technology

Wayne Kouchi
Leinani Rogala
Marissa Suehiro
Kristin Cabana

Management

John Fink
Suzanne Skjold
Elizabeth Greenhill
Nikki Fukada
Sarah Lee

Marketing & Communications

Carolyn Hyman
Hailey Kurtenbach
Jady Ojiri
Rayen Watanabe

Resource Development

Emmaly Calibraro
Charmaine Viegas
Ellen Kazama
Grayce McCullough
Gregory Bushnell
Jenna Richards
Marilyn Nimsgar
Mary Ellen Rubio
Benjamin Satterfield
Melvin Colquitt

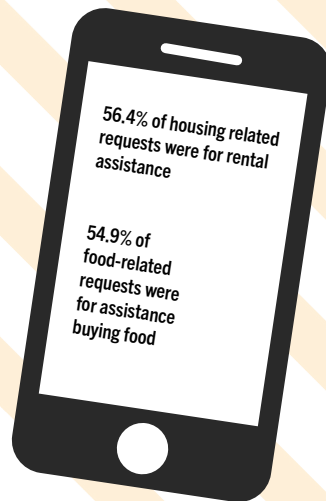
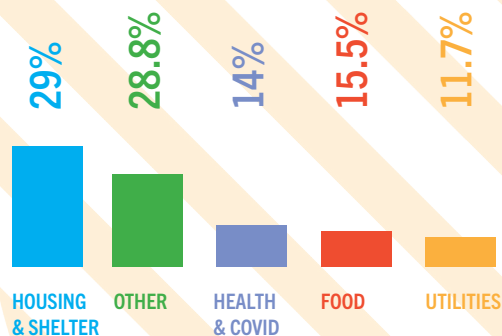


ALOHA UNITED WAY 211



As our community continued to adjust to another year of the pandemic, AUW's 211 statewide resource helpline offered support for people accessing rental relief, access to food, COVID-19 support services, and everything between. In 2022, AUW 211 assisted with 129,984 contacts, of which, 87,000 were online and 42,984 were through calls to the Helpline. Below, you'll see a few trends that emerged in 2022:

CALL VOLUME BY CATEGORY



NEARLY A THIRD OF REQUESTS FROM KŪPUNA



In 2022, **94%** of AUW211 calls were answered within 30 seconds.

42% of AUW211 requests are actually text messages.

DID YOU KNOW?

211 uses geo-location. Regardless of phone number area code, those seeking services who are physically in the state of Hawai'i will reach our local call center.

AUW 211 is a local call center staffed by Hawai'i Residents for Hawai'i Residents.

211 IS NOW TWO PROGRAMS! INFORMATION & REFERRAL AND SUBSTANCE USE DISORDER

- Four of the top 10 websites referring traffic to AUW211.org are local and state government websites.
- 211 Information & Referral partners with the Department of Human Services for SNAP pre-screenings.
- Natural disasters result in higher call volume.
- AUW211.ORG is available online for our entire community to access and search. The new search site was launched in 2022.

REAL-TIME DATA

Community members, nonprofits, government agencies and the business community can view and search data in close to real-time. That means better response and coordination of efforts. There is no dashboard or resource like it in Hawai'i.

hawaiidata.org/211data

DISASTER RESPONSE

AUW's 211 is a member of **VOAD** or **Voluntary Organizations Active in Disaster**. When emergencies occur, we respond. We are the conduit for emergency services and act as the primary referral center during any type of crisis.

SUD

Substance Use Disorder Helpline. For anyone struggling with substance use disorder, AUW now offers case coordination support in partnership with the Hawai'i CARES continuum. auw211.org/sud-care-coordination

SAFETY NET

1 DISASTER/CRISIS

Provides a broad range of assistance for individuals and families experiencing crisis with a goal of returning the household to stability. The category includes medical care, mental health services, substance abuse treatment, family violence services, and community disaster response.

2 RENT/UTILITY

Provides rent (or mortgage) and utility financial assistance. Agencies may pay rent, security deposit, mortgage, and utility expenses to landlords or providers on behalf of eligible clients.

3 FOOD

Provides access to food pantries, food banks, food delivery services and served meals programs.

4 SHELTER

Provides housing and related support services including emergency, transitional, and permanent housing.

5 TWO-YEAR GRANTS

Supports startup or pilot programs; programs/services with a higher degree of complexity; initiatives with a greater number of stakeholders or partners; initiatives that require substantial time planning; and new programs that are projected to be financially self-sustaining after the initial two years.

\$1,197,000.00 TO 42 GRANTEES

Each year Aloha United Way works collectively with partners to take action to improve individual and systemic economic, health, and social conditions, and reduce inequalities for all households of Hawai'i. In 2022 \$1,197,000 was awarded to 42 nonprofits agencies for Safety Net funding to provide basic human needs and support people experiencing crisis in the areas of emergency rent and utility relief, homeless programs and services, food security, COVID-19 support, Healthcare, and disaster relief.

FOOD SECURITY

Aloha Harvest
Boys & Girls Club of Hawai'i
Gregory House Programs
Hawai'i Meals on Wheels, Inc.
Kōkua Kalihi Valley Comprehensive Family Services
St. Francis Healthcare Foundation of Hawai'i
Susannah Wesley Community Center
The Pantry by Feeding Hawai'i Together
YMCA of Honolulu
Hawai'i Foodbank
Achieve Zero
Wai'anae District Comprehensive Health and Hospital Board, Incorporated

DISASTER AND CRISIS

American National Red Cross (Oahu)
Parents And Children Together
Waikīkī Community Center

RENT, MORTGAGE, & UTILITY ASSISTANCE

Honolulu Habitat for Humanity
Waimānalo Health Center
Domestic Violence Action Center
The Salvation Army Hawaiian & Pacific Islands Division (Oahu)
Helping Hands Hawai'i

HEALTHCARE

Aloha Medical Mission
Healthy Mothers Healthy Babies Coalition of Hawai'i
IHS, The Institute for Human Services, Inc.
Bobby Benson Center
Hawai'i Health & Harm Reduction Center

COVID-19

Catholic Charities Hawai'i
Mediation Center of the Pacific
Legal Aid Society of Hawai'i

SHELTERS & HOMELESS SERVICES

Achieve Zero
Child and Family Service (we funded them a case manager to offset)
Family Promise of Hawai'i
Hale Kipa Inc.
Ho'ola Na Pua
Honolulu Community Action Program, Inc.
IHS, The Institute for Human Services, Inc.
Kalihi-Palama Health Center
Mental Health Kōkua
Project Vision Hawai'i
Residential Youth Services & Empowerment dba RYSE
United States Veterans Initiative
Wai'anae District Comprehensive Health and Hospital Board, Incorporated
Waikīkī Health
Women in Need (WIN)



PARTNER AGENCIES

Aloha United Way worked with 320 partner agencies in 2022 and provided more than \$7.9M in Safety Net, HUD, & EFSP funds awarded to partner agencies. Partner agencies benefit by receiving funds allocated by individual donors and workplaces that AUW cultivates to support their work. As a benefit to donors, we conduct thorough research and manage a partner agency list filled with some of the most impactful nonprofits in the community. The list includes agencies from the neighbor islands and United Way counterparts on those islands, as well.

We bring together agencies, services, research, funding and communication to build networks of action. Our nonprofit partners are committed to change and we are there to support their work and to provide leadership and resources to make the impact of every action greater.

We helped our partner agencies in 2022 by investing more than \$13M in our community and by providing tools, reports, and opportunities to exchange ideas and leverage their work with other agencies in our network.



BOARD OF DIRECTORS

Patrick “Rick” Ching

Board Vice Chair

Servco Pacific Inc.

Randy Perreira

Board Vice Chair

HGEA Local 152

Guy Churchill

Board Assistant Treasurer

Bank of Hawai'i

Brian Bowers

Board Secretary

Bowers + Kubota Consulting

Jim Alberts

Board Assistant Secretary

Hawaiian Electric

Avery Fukeda

Hawai'i Theatre/ (SYL rep)

Bettina Mehnert

Architects Hawai'i

Bill Weeshoff

First Hawaiian Bank

Blenn Fujimoto

Central Pacific Bank

Carrie Ann Tsutsui

Hawai'i Pacific Health

Chris Benjamin

Alexander and Baldwin

Dane Teruya

American Savings Bank

Daniel Arita

American Floor & Home

Dee Lim

Enterprise Holdings (WU rep)

Doug Johnstone

The Howard Hughes Corp.

Erika Lacro

University of Hawai'i

Glen Kaneshige

Nordic PCL Construction

Greg Carlson

Kaiser Permanente /Maui
Health Services

Jason Hagiwara

KITV

Jason Ito

Kyo-ya Management Co, Ltd.

Jayne Pu'u

HMSA

Megumi Sakae

Marr, Jones & Wang / Marathon
BEI Hawai'i

Rowena Buffett Timms

The Queens Health System

Savan Patel

S & P Holdings, Inc.

Su Shin

Hawaiian Telcom

Wilbert “Wil” Holck

Hawai'i State Teachers
Association

Will Cunningham

UPS

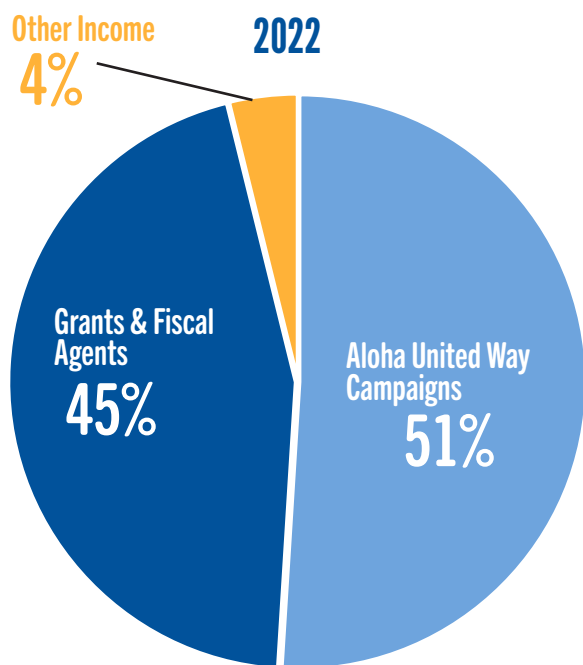
For the Years Ending December 31, 2022 and 2021

FUNDS RAISED

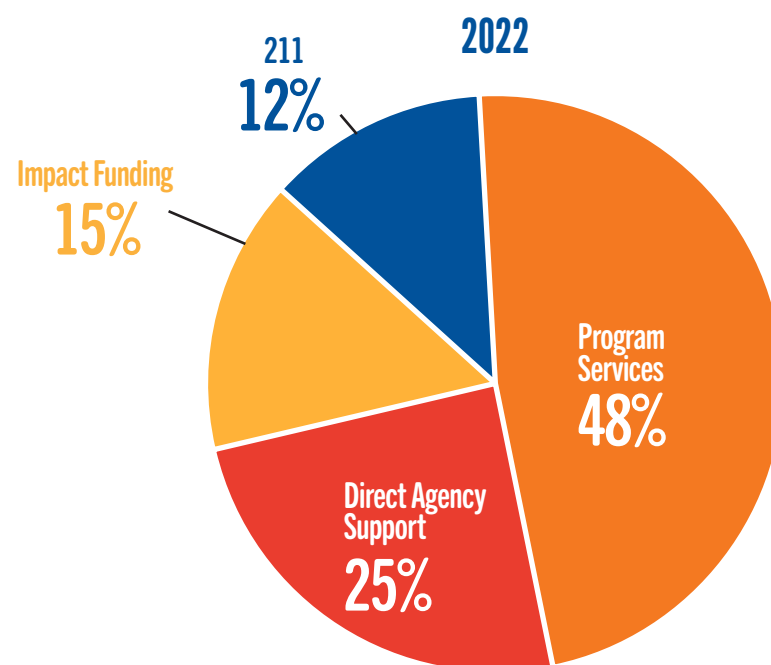
	2022	2021
Aloha United Way campaigns	\$ 9,504,289	\$ 9,605,099
Grants & fiscal agent ¹	8,416,693	17,693,552
Other income	719,002	3,109,631
Total Funds Raised	\$ 18,639,984	\$ 30,408,282

PROGRAMS & SUPPORT

	2022	2021
Donor designations	\$ 3,981,827	\$ 4,373,415
Impact area allocations	2,498,104	1,905,091
Program services ¹	9,761,091	17,380,447
Fundraising	2,071,831	1,808,937
Administration	1,721,563	1,614,629
Pledge loss & miscellaneous	142,886	926,555
Total Programs & Support	\$ 20,177,302	\$ 28,009,074



	2022
Direct Agency Support	\$ 3,981,827
Impact Funding	2,498,104
211	2,014,143
Program Services	7,746,948
Total	\$ 16,241,022



Note 1: From mid 2020 through early 2022 Aloha United Way, Inc. (AUW) provided a variety of COVID-19 assistance programs. These programs provided rent, mortgage, and/or utility assistance for Hawai'i renters and homeowners who experienced economic hardship and/or reduction in income due to the pandemic. Two of these programs were funded by the Federal CARES Act and administered in collaboration with the State of Hawai'i, the City & County of Honolulu, along with nonprofit partner agencies. Additionally, AUW administered the Department of Hawai'ian Home Lands (DHHL) COVID-19 Emergency Rental Assistance Program, which provided rental assistance for eligible Native Hawaiians (who were on DHHL's waiting list as of 12/31/2018) and experienced a loss of income or job as a result of COVID-19. This program provided a rental security deposit and/or rent payments for up to 12 months. In 2021, AUW also administered the Hawai'i Utility Bill Assistance Program with Hawaiian Electric which helped Hawai'i residents who were behind on their electric, water, sewer, and gas bills.

Combined, AUW paid out approximately \$26K in 2022 vs. \$7M in 2021 for COVID-19 assistance programs.

In 2022 and 2021, AUW was awarded a grant under the Continuum of Care (CoC), which is funded by the U.S. Department of Housing and Urban Development (HUD), Permanent Supportive Housing. Of the \$5,635,359 granted by HUD in 2022, approximately \$2,613,572 was expended and earned in 2022. Of the \$5,548,580 granted by HUD in 2021, approximately \$3,489,553 was expended and earned in 2021 and \$2,059,027 was expended and earned in 2022.

Note 2: AUW's Form 990 and audited Financial Statements are available upon request.

Note 3: In 2022 and 2021 AUW's chief administrative personnel were John Fink, President & CEO and Suzanne Skjold, COO.

SPECIAL THANKS TO THE FOLLOWING DONORS IN 2022
GRANTS, FOUNDATIONS & TRUSTS

Alexander & Anukriti Hittle
 Alfred M. & Charlyn Masini Fund
 Alice E. Davis Estate
 Ann Barclay Rovner
 Anna B. Lindemann Fund
 Aranoff Keiki Fund
 Atherton Family Foundation
 Barbara S. & Allen C. Wilcox
 Bishop Street Funds
 BizGym Foundation
 Bridgestone Firestone Trust Fund
 C. K. Ai Foundation
 Chuck Yim Gee Charitable Trust Fund
 Clark: Aloha United Way Fund
 Community Stabilization Initiative Fund
 Cooke Foundation
 DJ Hirschmann Family Foundation
 EHW Broadbent Foundation
 Ellen M. Koenig Memorial Fund
 Ford Foundation
 Frear Eleemosynary Trust
 G and L Hirokawa Family Fund
 Harold K. L. Castle Foundation
 Harry/Nee-Chang Chock Wong Fund
 Hawai'i Bowl Foundation
 Hawai'i Food & Wine Festival Foundation
 Hawai'i Hotel Industry Foundation
 Hazel H. Takumi Foundation
 Hearst Foundation

Intel (Corporate Foundation)
 Ivena Ziegenhein Fund
 J. Watumull Fund
 Jeffrey Polovina & Cathrine Watson Fund
 John and Allison Lyles Fund
 John and Kathy Marlia Family Foundation
 K.J. Luke Foundation
 Kathryn Inkinen Fund
 Kitaro Watanabe Fund
 Kosasa Family Fund
 Leonora F. & Joseph K. Wee Family Fund
 Lionakis Foundation of the Sacramento Region Community Foundation
 Lucy G. Alexander Trust
 Marie Kohli Fund
 McInerny Foundation
 Meahl Family Foundation
 Michael B. Wood Foundation
 Minnie P. Cuthbertson Fund
 Mobile Giving Foundation
 Mohr Family Fund
 Omidyar Ohana Fund
 Peter Drewliner Foundation
 Rainee Barkhorn Charitable Foundation
 Rev. Takie Okumura Family Fund
 Robert M. Ehrhorn Sr. Trust
 Ruby Shigeta Trust
 Samuel N. & Mary F. Castle Foundation
 Schwab Fund for Charitable Giving

See Dai Doo Society
 Shidler Investment Corporation
 Strong Foundation
 TE Connectivity Employee Engagement Fund
 The Ben and Miriam Lau Foundation
 The Corinne M. Tosaki Trust
 The Gates Family Foundation
 The Harry & Jeanette Weinberg Foundation
 The Hartley Foundation
 The James and Juanita Wo Foundation
 The Kresge Foundation
 The McVay Family Foundation
 The MGive Foundation
 The Pew Charitable Trusts
 The Schuler Family Foundation
 The Seto Foundation
 The Seymour Terry Trust
 The Seymour Terry Trust
 Thomas J. Vincent Foundation Inc.
 TisBest Philanthropy
 Valvon Foundation
 Vanguard Charitable
 Victoria S. & Bradley L. Geist Foundation
 William G. Irwin Charity Foundation

TOCQUEVILLE SOCIETY
\$10,000 or more
 Anonymous (5)
 Alan and JoAnn Oshima

Alan and Joanne Arizumi
 Arnold and Thuy Martines
 Bambi and Mitch D'Olier
 Ben and Yvonne Godsey
 Ben Schuster & Valerie Wang
 Benjamin and Patricia Ancheta
 Bettina Mehnert
 Blake & Della Bushnell
 Blenn and Ruth Fujimoto
 Bob and Lori Harrison
 Bob Hines and Catherine Ngo
 Brandt G. Farias
 Mr. & Mrs. Brian Bowers
 Bryan Luke
 C. Scott and Nancy Wo
 Cameron Nekota
 Carl Williams & Gail Nakamura
 Cathy Camp
 Chad and Leilani Karasaki
 Chad Goodfellow
 Chris and Melissa Benjamin
 Christine Camp
 Christopher Dods
 Constance A. Hastert
 Dan and Tara Schaberg
 Daniel Arita
 David & Kathy Morimoto
 David and Chris Arita
 David and Kellyn Okabe
 David Hudson and Dana Kokubun
 Dean and Emmaly Calibraro
 Dean Kim
 Dean Shigemura
 Denis and Ella Isono
 Dennis M. Tsuhako

Dexter Kubota
 Diane and Scott Murakami
 Dick and Michele Rosenblum
 Dr. Thomas and Mi Kosasa
 Emily Reber Porter
 Ernest Ahumada
 Esme Corbett and Mike Gold
 G. Todd Withy and Jean Malia Orque
 Galen and Patricia Ho
 Gayle Sunabe
 Gina L. Marting
 Glen A. Kaneshige
 Greg Dinges
 Greg Hazelton
 Guy Churchill
 Jackie Ingamells
 James Frierson
 James Polk
 Jason and Raylene Nagai
 Jason Ito
 Jeff and Kimberly Case
 Jeffrey and Lynn Watanabe
 Jennifer Oyer
 Jerry Russo and Mary Sellers
 Jill and Garry Higa
 Jill and Norb Buelsing
 Joanna Oshiro
 Joel Rappoport
 John and Shari Fink
 Jojo Watumull
 Kaulana and Joni Young
 Kent and Jean Tsukamoto
 Kevin and Michele Saito
 Mr. & Mrs. Kevin T. Sakamoto
 Kimarie Matthews

Lance A. Mizumoto
 Lance and Wanda Parker
 Lawrence and Patricia Rodriguez
 Leela and Sam Stake
 Lindsay Kikawa Yoshiki and Eric Yoshiki
 Lori Teranishi
 Luke Yeh
 Manny Edmonson
 Mark A. Hayes
 Mark Cochrane
 Marvin B. and Rae Alice Hall
 Matt and Dianne Cox
 Matthew Emerson
 Michael and Shirley Grossi
 Michael Edward Green
 Michelle Kirk
 Mike and Joyce Ching
 Mike and Terri Taylor
 Miki Hardisty
 Morris Stoebner
 Neill and Liz Char
 Nelson Befitel
 Nicholas Huntz
 Patrick D. and Marybeth W. Ching
 Paul and Lynda Yonamine
 Paul Kosasa
 Peter and Michelle Ho
 Peter and Yuki Dames
 Peter Dooher and Liz Jebara
 Peter Hirano
 Ralph and Erlinda Mesick
 Robert & Carolyn Fujioka
 Robert and Shera Hiam
 Rodney M. Harano
 Ronald H. Kikawa
 Ross and Dayle Murakami
 Russell Rasmussen

Scott Hayashi
 Scott Seu and Carrie Okinaga
 Scott Yoshihara
 Shane and Koren Mizusawa
 Sheila Hessian Watumull
 Shelee Kimura
 Stanley Uyehara
 Stephen and Susan Metter
 Steve & Amy Corbisier
 Su Meisenzahl
 Susan Ing and Kent Visher
 Susanne and Thom Millard
 T. Michael and Carol Ai May
 Terri and Garrett Fujii
 The Honorable Glenn Kim
 The Shidler Family Foundation
 Timothy and Sarah Howell
 Vernon Wong and Carla Fukumoto
 Walter Dods, Jr.
 Wesley K. Yamamoto
 Will Cunningham
 William Liggett
 Yamamoto Caliboso LLC

LEADERSHIP DONORS
\$1,000 or more

Anonymous (12)
 Aaron Akau
 Aaron Kanemaru
 Aaron Wallen
 Agatha Viernes
 Aimee-Marie Lipat
 Akiko Yazawa
 Alan Chun
 Alan Suzuki
 Alan Tokunaga
 Albert Hamai
 Alethea Seto

Alex Fanale
 Alexander Campbell
 Alexander Harris
 Alfred Itamura
 Alice Tse
 Alicia Moy
 Alison Leong
 Alison Masutani
 Alison Tomisato
 Allison Nagamine
 Alton Kuioka
 Alton Murakami
 Alvin Kajiwara
 Alyssa Nada
 Amanda Jones
 Amelia Fong
 Amy Aguigui
 Amy Fujiwara
 Amy Libertini
 Amy Peckinpaugh
 Amy Yamakawa
 Amy Yonashiro
 Andrea Gaines
 Andrea Mccarley
 Andrew Arakawa
 Andrew Okabe
 Andrew Sutton
 Andy Ah Moo
 Angelica Santiago
 Angelina Nakasone
 Ann Katekaru
 Ann Marsteller
 Ann Nishihira
 Anna Oshiro
 Anne Chan
 Anne Mapes
 Annette Wedemeyer
 Annie Matsuwaka

Aretina Trepczyk
 Arnold Suzumoto
 Arthur Shak
 Ashlee Matsumoto
 Ashley Short
 Ashley Smith
 Aspy Palia
 Audrey Gima
 Audrey Matsuoka
 Avelino Halagao
 Barbara Kohara
 Barbara Schneider Yeackel
 Barry Jim On
 Beatrice Gould
 Beau Oshiro
 Ben Yoshino
 Benjamin Naki
 Benny Capalnas
 Bernard. Ho
 Bertram Apo
 Bill Weeshoff
 Blanche Fountain
 Bobbie Wright
 Brad Gushiken
 Brandon Higashi
 Brandon Kamigaki
 Brenda De Ryke
 Brenda Lee
 Brenda Mitchell
 Brennan Tom
 Brent Noyama
 Brian Ishikawa
 Brian Kunioka
 Brian Matsuura
 Brian Watase
 Brigitte Newcomb
 Calla Oda
 Camille Au

Cara Hatton
 Carey Inouye
 Carlene Nakamoto
 Carol Koga
 Carol Langner
 Carol Marx
 Carol Ono
 Carol Whitesell
 Carole Suzui
 Caroline Kunitake
 Carrie Ann Tsutsui
 Carrie Okinaga
 Cary Koike
 Cary Kondo
 Casey Tollman
 Catherine Remigio
 Catherine Sato
 Cathy Bachl
 Cathy Matsuoka
 Celine Smale
 Cescent Oshita
 Charles Degarmo
 Charles Kaneshiro
 Charles Roberts
 Chastity Baysa-Chun
 Chelsea Seidman
 Cheryl Inouye
 Cheryl Shozuya
 Cheryl Toyama
 Cheryl Yoshida
 Chisato Takeda
 Chris Anjo
 Chris Otto
 Chris Simco
 Chris Wirsing
 Christian Fern

Christina Nguyen

Christine Chun

Christine Hirano

Christine Kaizawa

Christopher Abbott

Christopher Ferry

Christopher Keller

Christopher Marumoto

Chuck Dando

Cindy Takeda

Claire Shimizu

Clare Cabacungan

Clarence Gomes

Claudia Akroyd

Colette Jungles-Galarsa

Colleen Kato-Kashiwa

Colleen Milbury

Collins Lam

Conrad Higa

Constance Deming

Corliss Ota

Cory Okuda

Courtney Kajikawa

Craig Norris

Craig Park

Craig Williamson

Cristina Livesay

Curt Ai

Curtis Tiritas

Curtis Tom

Cynthia Burdge

Damien Kim

Dan Hirota

Dan Mestas

Dana Takushi

Daniel Fong

Daniel Ford

Daniel Nishikawa

Daniel Suthers

Danielle Canfield-Jones

Dara Young

Darcy Endo-Omoto

Darlene Blakeney

Darlene Morikawa

Darrah Brown

Darrel Hoke

Darrell Yamagata

Darren Okihara

Darryl Nagano

Darryl Parran

David Akana

David Alfaro

David Bareng

David Komuro

David Tubman

David Yew

Davin Nakasato

Dawn Hirai

Dawna Emoto

Dean Fujikawa

Dean Oshiro

Debbie Ramelb

Debra Luning

Dede Guss

Delores Lim

Denby Fawcett

Denise Au

Derek Wong

Derrick Wong

Desiree Braga

Diane Aniya

Diane Kawauchi

Dick Morita

Dinah Hayashi

Dirk Yoshizawa

Dominic Chow

Donald Jones

Donald Mackay

Donald Morrison

Donald Yannell

Donna Miyashiro

Dora Rivera

Doug Matsuoka

Drake Miller

Duncan Macnaughton

Dwight Yeager

Earl Fusato

Ed Kim

Edward Conklin

Edward Pei

Edward Vergara

Edward Yoshimura

Edwin Paz

Elaine Lindsey

Elizabeth Grossman

Elizabeth Wong

Elizabeth Zack

Ellen Kaneshiro

Ellen Kazama

Elliot Mills

Elwin Goo

Emanuel Edmondson

Emile Alano

Emmaly Calibraro

Eric Chen

Eric Kunisaki

Eric Nakatsuka

Eric Wright

Erik Fairfax

Erin Gonzalez

Erlinda Alegre

Ernest Hui

Ernest Lau

Ethel Yamashige

Eun Ja Cho

Eunice Lehua Pate

Eva Belardo

Eva Belardo

Eva Moravcik

Evelyn Rudek

Evelyn Young

Expedita Tanicala

Fabio Bresolin

Faith Shido

Fay Yamakawa

Ferdinand Benito

Francis Wright

Frederick Lwee

Galen Nakamura

Garret Matsunami

Garret Yoshimi

Garry Guan

Gary Fukumoto

Gary Goodwin

Gary Kajiwaru

Gary Trepte

Gay Mcphail

Gayle Furuta-Okayama

George Burkards

George Fukuhara

George Kuo

George Wilkens

George Yamada

Gerald D. & Mon Evans

Gerald Hew

Ginny Tiu

Glenn Mason

Glenn Perry

Grayce Mccullough

Grayson Nose

Greg Knue

Gregg Hirano

Gregg Ichimura

Gregory Akimseu

Gregory Carlson

Gregory Hee

Gregory Lee

Gregory Moore

Gregory Sitar

Guy Kamitaki

Guy Sakamoto

Guy T Shibayama

Gwen Miyasato

Hannah Pahia

Harold Alejandro

Haylee Faustin

Haylee Faustin

Heather Allen

Heen Lee

Henry F. Pang

Hiromu Yogi

Hobbs Lowson

Igor Mokan

Iris Ito

Ivory Herd

J. Frisbee & Susan Campbell

J. Pedro

Jacky Leung

Jacqueline Tellei

James Kahalewai

James Knoth

James Moniz

James Reinhardt

James Yamamoto

James Yuen

Jamie Asato

Jan Lai

Jane Houk

Jane Schoonmaker
 Janel Denny
 Janelle Higa
 Janelle Kosaki
 Janis Okamoto
 Janna Nakagawa
 Janna Sye
 Jared Kashiwabara
 Jason Cosma
 Jason D'olier
 Jason Mecham
 Jason Smith
 Jason Sunahara
 Jayme Nonaka
 Jean Yee
 Jean-Louis Loveridge
 Jed Miyazaki
 Jeff Callangan
 Jeff Dunn
 Jeff Luedecker
 Jeffrey Cummins
 Jeffrey Eslinger
 Jeffrey Overton
 Jeffrey Yamamoto
 Jennifer Elflein
 Jennifer Gershman
 Jennifer Kuon
 Jennifer Lam
 Jennifer Reiko Tanaka
 Jennifer Walker
 Jennifer Zukeran-Kerr
 Jeri-Anne Yamada
 Jerris Hedges
 Jessica Nohara Salvacion
 Jessica Sphar
 Jessie Anne Roy
 Jill Hoggard Green
 Jimmy Alberts

Joan Anderson
 Joan Lee Husted
 Joan Martin
 Joan White
 Joanne Arizumi
 Joanne Barradas
 Joanne Chee
 Jocelyn Ancheta
 Jocelyn Chagami
 Joel Cablay
 Joel Yuen
 John & Lydia Chock
 John Arizumi
 John Bly
 John Farmer
 John Flanigan
 John Fullmer
 John Huitt
 John Hulihe'e
 John Lambert
 John Ludwick
 John Mckenna
 John Monahan
 John Murphy
 John Sims
 John Tsui
 John Vann
 John Yamane
 Jon & Ellen Polokoff
 Jon Bratten
 Jon Fujimoto
 Jon Kawena Simmons
 Jon Taketa
 Jon Tokashiki
 Jonathan Auala-Ellis
 Jonathan Carr
 Jonathan Esperanza
 Jonathan Lai

Jordan Conley
 Jordan Hino
 Jose Quiocno
 Joseph Lilio Jr
 Joseph Marshall
 Joseph Ventura
 Joseph Viola
 Joy Aipoalani
 Joy Gangloff
 Joy Ishiara
 Joyce Baker
 Joyce O'brien
 Judy Keller
 Julia Kelly-Pankow
 Julie Smolinski
 Junko Ady
 Justine Hura
 Kahea Williams
 Kaleo Kekoolani
 Kaleo Schneider
 Kanani Silva
 Kara Kitazaki-Chun
 Karen Choi
 Karen Cox
 Karen Nakasone
 Karen Shigematsu
 Karen Tiller Polivka
 Karl Kobayashi
 Kathleen Chu
 Kathleen Fujihara-Chong
 Kathleen Wagner
 Kathy Chang
 Kathy Sokugawa
 Kawika Fiddler
 Keene Fujinaka
 Keiko Inouye
 Keith Asato
 Keith Debusca

Keith Nouchi
 Keith Rogers
 Keith Sato
 Kekumaielani Obrey
 Kelly Laporte
 Ken Aramaki
 Ken Spence
 Kenneth Calimpong
 Kenneth Kupchak
 Kenneth Matsuura
 Kenneth Miller
 Kent Lau
 Kent Lucien
 Keriann Osada
 Kerrylynn Vea
 Kerstan Wong
 Kevin Kumashiro
 Kevin Leong
 Kevin Mccary
 Kevin Mccrary
 Kevin Yoneshige
 Kiana Kam
 Kiha Sai
 Kila Kamakawiwoole
 Kim Hagi
 Kim Hanson
 Kim Morrissey
 Kira Higa
 Kreg Gotsch
 Kris Ralleca
 Kristen Konishi
 Kristi Maynard
 Kristi Nohealani Lefforge
 Kurt Murao
 Kurt Murata
 Kurt Schanzenbach
 Kyle Bischoff
 Kyle Sakamoto

Kyle Weighner
 Lacey Nakaguma
 Lanae Santos
 Lance Ichimura
 Lance Nakamura
 Lance Okuda
 Lani & Uson Ewart
 Lani Fernandez
 Lari Bloom
 Lauloa Fereti
 Laura Dang
 Laura Guinn-Hall
 Laura Nakasone
 Lauralei Tanaka
 Laverne Cummins
 Lea Nakamura
 Leanne Nikaido
 Lee Cody
 Lee Moriwaki
 Lei Decota
 Leif Ericson
 Leigh Shiroma
 Len Tanaka
 Len Tokumi
 Leonard Fernandes
 Leonard Leong
 Leroy Chincio
 Lesley Yost
 Lester Ng
 Letitia Hickson
 Licia Lau
 Lin Peterson
 Linda Ho
 Linda Katagiri
 Linda Nakamura
 Linda Takayama

Linda Wong	Mark Mugiishi	Michael Unebasami	Nona Tamanaha	Quentin Machida
Lisa Berard	Mark Murakami	Michael Victorino	Nora Nomura	Rachel Anfinson
Lisa Martin	Mark Phongsavath	Michael Yamada	Noriko Ostrem	Ralph Portmore
Lisa Nakama	Mark Recktenwald	Michele Otake	Norman Ahu	Ralph Tasaka
Lisa Nakama	Mark Shimabukuro	Michelle Kirk	Norman Gentry	Randall Wakumoto
Lisa Rapp	Mark Tokito	Michelle Sato	Norman Hong	Randall Young
Lisa Wong	Mark Wong	Michelle Stofle	Northshore Exteriors, Inc	Randolph Moore
Liwai Napuelua	Mark Yamakawa	Michiko Hikita	Novelia Rivera	Randy Au
Liz Carlson	Marsha Colotario	Mike Betz	Patricia Ann Thomson	Randy Faatau
Lloyd Jones	Mary Cutler	Mike Kawamoto	Patricia Basso	Randy Muraoka
Lloyd Yamashige	Mary Jean Saguid	Mike Wu	Patricia Bazin	Randy Perreira
Long Lac	Mary Lee Young	Miki Ikeda	Patricia Hamamoto	Raoul Magana
Lorena MCGovern	Matthew Matko	Miranda Tsai	Patricia Tanouye	Raymond Bristol
Lorenzo Eagan	Matthew Pollard	Momi Akimseu	Patrick Duarte	Raymond Munger
Lori Isara	Matthew Sagum	Mona Jarvis	Patrick Kirch	Raymond Okamoto
Lorie Ann Nagata	Megan Hackett	Mona Y. & Michael F. Miyamura	Patrick Mcguirk	Rebecca Choy
Lorin Bettencourt	Mel Pupuhi	Morris Mitchell	Patrick Williamson	Rebecca Jandoc
Lorinda Faleafine	Melanie Horikami	Morris Rabinko	Patsy Nanbu	Regina Luuloa
Lorraine Hirokawa	Melanie King	Moses Kalili	Paul Asano	Reid Sasaki
Louise Pagotto	Melanie Pflingsten	Mufi Hannemann	Paul Ito	Rene Kamita
Lyle Shizumara	Melissa Matsuura	Myron Monte	Paul Kaiser	Renee Igarashi
Lyle Tamagawa	Melissa Torres-Laing	Nancy Ayotte	Paul Maehara	Rhonda Griswold
Lynne Okazaki	Melvin Miyamoto	Nancy Metcalf	Paul Nakachi	Rian Dubach
Lynne Unemori	Meredith Ching	Nancy Miura	Paul Silen	Richard Clifton
Marcia Wright	Michael Choo	Natalie Fogle	Paz Fonacier	Richard Cox
Marco Abbruzzese	Michael Ciaramitaro	Natalie Ota-Zane	Penelope Tong	Richard Eber
Marcus Oshiro	Michael Coates	Nathan Ramler	Penni Lee	Richard Gushman
Mareitta Aponte	Michael Ferreira	Neal Milner	Pepito Galvez	Rikio Mizushima
Margaret Harada	Michael Jones	Neal Yokota	Peter Besenbruch	Rita Jugo
Margaret Sakoeki	Michael Kamaka	Ned Rodrigues	Peter Mahoe	Robert & Hazel Hirayama
Margaret Tfy Dang	Michael Kanemoto	Nelly Uehara	Peter Sheehan	Robert & Nancy Rocheleau
Mari Cardines	Michael Kim	Nelson Lau	Peter Young	Robert Chamberlain
Maria Barradas	Michael Miller	Nick Tasaka	Phil Sammer	Robert Gardiner
Maria Sasaki	Michael Sevaetasi	Nicole Matsuo	Philip Mow	Robert Harrison
Marissa Machida	Michael Stollar	Nicole Reimers	Philip Roberson	Robert Kistner
Mark Burak	Michael Tanoue	Nikki Nguyen-Tengan	Pono Almeida	Robert Little
Mark Glick	Michael Tom	Nita Lynn Williams	Prinya Friel	
Mark Kawakami	Michael Tottori	Niti Villinger	Prudence Quebatay	

Robert Nickel
 Robert Pascua
 Robert Peters
 Robert Whittier
 Robert Wo
 Robin Hadwick
 Robyn Tanaka
 Rodney Lum
 Rodney Maile
 Roger Fujioka
 Roger Khlopin
 Ronald Brown
 Ronald Chang
 Ronald Yee
 Ross Sakuda
 Rowena Adachi
 Rowena Buffet Timms
 Roxann Bulman
 Roy & Janet Kirihara
 Roy Hamada
 Royce Fukunaga
 Ruby Fujioka
 Ruey Jane Ryburn
 Russell Inouye
 Russell Lum
 Ruth Erickson
 Ryan Field
 Ryan Kitamura
 Ryan Kuniyuki
 Ryan Yoshida
 Ryson Matsumura
 Sachie Kaneshiro
 Sally Dunan
 Sandra Horita
 Sandra Shirachi
 Sandy Harvey
 Sarah Morihara
 Scott Ezer
 Scott Kuwabara
 Scott Lafontaine
 Scott Morita
 Scott Parker
 Scott Rodie
 Scott Rowland
 Scott Taber
 Scott Turn
 Sean Haggerty
 Sean Scott
 Shanae Souza
 Shane Luuloa
 Shannon Okinaka
 Shari Ann Daluson
 Shari Ishikawa
 Sharlene Ginoza-Lee
 Sharon Crofts
 Sharon Suzuki
 Sharon Twigg-Smith
 Shawn Benton
 Shayne Serai
 Sheila Gomes
 Sherri Okinaga
 Sherri Tokuda
 Sherry Menor-Mcnamara
 Sheryl Miura
 Staci Balmoja
 Stacy Armstrong
 Stacy Waikoloa
 Stafford Kiguchi
 Stanley Aniya
 Stella Catalan
 Stephanie Heu
 Stephanie Nishimura
 Stephanie Webber
 Stephen & Robin Tze Ching
 Stephen Bradley
 Steven Ai

Steven Alm
 Steven Araki
 Steven Arashiro
 Steven Glazier
 Steven Kakuni
 Steven Seto
 Steven Sylvester
 Stuart Saito
 Sue Miller
 Summerset Lovett
 Susan Chan
 Susan Char
 Susan Fukunaga
 Susan Harada
 Susan Thoemmes
 Susan Yokoyama
 Sutobin Halim
 Suzanne Skjold
 Suzanne Ueno
 Suzanne Young
 Syin Chao
 T. Sekiya
 Tammy Miyashiro
 Tammy Nakamatsu
 Tamotsu Tanaka
 Tara Miyashiro
 Taryn Miyamoto
 Taryn Salmon
 Taylor Lee
 Tayne Sekimura
 Teresita Fernandez
 Teri Young
 Terrence George
 Terri Okada
 Terry Garcia
 Terry Sasamura
 Thai Nguyen
 Thelma Kam

Theodore Metrose
 Therese Dickerson
 Thomas Kaneshiro
 Thomas Young
 Tierney Morikawa Rostron
 Tiffany Chang
 Timothy Chang
 Timothy Cottrell
 Todd Middleton
 Todd Sugita
 Todd Taba
 Todd Yamanaka
 Tom & Melvine Mendes
 Torrie Inouye
 Traci Maeda
 Traci Takatani
 Tracy Aiwohi
 Tracy Hayashi
 Travis Masuno
 Trevor Robb
 Trisha Martin
 Trong Son
 Tyrone Tahara
 Ululani Hirohata
 Unyong Nakata
 Vaai Ala
 Valaine Vasquez
 Vance Jones
 Vanessa Foster
 Venus Rosete-Medeiros
 Vera Wright
 Verna Naomi Muraoka
 Vernalyn Uson
 Vernon Hirata
 Vernon Roley
 Veronica Wong
 Vicki Lau
 Victor Nichols

Victoria Ichihara-Gorman
 Vija Sehgal
 Vincent Chan
 Vincent Flores
 Vincent Perez
 Violet Kusatani
 Virgie White
 Virna Cheung
 Wallace Hirai
 Wanda Vorsino
 Warren Luke
 Wayne Hamano
 Wayne Takahashi
 Wayne Takara
 Wayne Teruya
 Wayne Tuulima
 Wendy Fujimoto
 Wendy Kishida
 Wesley Cheung
 Wesley Kimura
 Wesley Kurakake
 Wilfred Ikemoto
 Wilfred Lum
 Wilfred Miyasaki
 Willard Haraguchi
 William Albritton
 William Liesman
 William Makaneole
 William Shiroma
 William Ward
 Wilma Kanda
 Wilson Chan
 Winston Sun
 Yao Hung Tai
 Yoko Farias
 Zach Cantor



Would you like to create a lasting legacy while planning for your future and that of your loved ones? A planned gift to Aloha United Way can provide critical, ongoing support to our poverty-fighting initiatives. Join us to help struggling Hawai'i residents create brighter futures for themselves and their families for generations to come.

FIRST, WHAT IS A PLANNED GIFT?

A planned gift can be as simple as naming Aloha United Way as a beneficiary in your will, trust, retirement plan, life insurance policy or other financial accounts. Planned gifts are added to our Endowment Fund, a permanent capital reserve that supports our work today, tomorrow and for generations to come. When you make a planned gift to AUW, you become a member of our Ānuenue Legacy Society.

WHAT ARE SOME GIFT OPTIONS?

- Retirement Accounts including IRAs
- Life Insurance
- Wills & Trusts (bequest)
- Stock and Real Estate - using appreciated property to fund a planned gift
- Life Estate (valuable property you use during lifetime with arrangements to give to charity upon death)
- Charitable Gift Annuity (CGA) (income producing)
- Charitable Remainder Trust (CRT) (income producing)
- Charitable Lead Trust (CLT)
- Donor Advised Fund (DAF)

WHAT DOES A PLANNED GIFT OFFER?

- A legacy that will impact generations to come
- A way to honor someone else's life and name into the future
- Potential for lesser tax burdens for family
- Potential estate tax savings

Please contact **Emmaly Calibraro** at (808) 543-2204 or email emmaly@auw.org.

ĀNUENUE LEGACY SOCIETY

Rainbows may be a daily occurrence in Hawai'i, but each one is special, bringing beauty into the lives of all touched by it. As a member of the Ānuenue Legacy Society, you will have the opportunity to attend special behind-the-scenes events at Aloha United Way and to connect with others who have chosen to make a planned gift.

ĀNUENUE LEGACY SOCIETY DONORS

- | | |
|---------------------------------|--------------------------------------|
| Anonymous (11) | Joyce Mitsunaga |
| Andrew Wong | Lisah-Marie Purcell |
| Billy Ellis | Lorraine Akiba |
| Chad D. Snater | Lourdes Wamsley |
| Cynthia Winegar | Mako Ikemiyagi |
| David Kirkeby | Marivic Dar |
| David W. Thomas | Michael and Trudie China |
| Dean and Emmaly Calibraro | Michael Gold and Esme Corbett-Suzuki |
| Deborah and Eugene Huebler, III | Mike and Terry Taylor |
| Diane Baker | Nicholas Thornton |
| Donald Mair and Joan Yahagihara | Patricia A. Pietschmann |
| Douglas and Donna Hom | Randall Yee |
| Edison M.C. Chong | Renee Arakaki |
| Edward S. Van Lier Ribbink | Richard J. Pietschmann III |
| Grace and Rylan Nushida | Robert and Shera Hiam |
| Helenann Lauber | Robert Armstrong |
| Howard H. and Audrey M.A. Karr | Roberta Rinker-Ludloff |
| Ilaniahloha Kanakaole | Rodney Cavaco |
| Jamie Musshorn | Warren Wee |
| Jessica Dalrymple | Wendy Abe |
| Jessica L.S. Lum | |